

# Mikelnguut Elitnaurviat

*Home of the ME Mushers*



## IMPORTANT DATES AND TIMES

**Tuesday, 8/22/22**—Bethel ASB  
Meeting starts at 6:00 p.m. @ GJE Library

**Th. & Fri., Aug. 31 & Sept. 1-**  
Early Release at NOON both days.

**Monday-Friday, Sept. 4-8 –**  
No School (Fall Break & Teacher Inservice Days)

For more calendar information, visit the ME  
School website at: <https://me.lksd.org>

## FALL BREAK

From September 4 -8, there will be no school. School doors will reopen at 7:45 a.m. on Monday, September 11th.

On both **Aug. 31 & Sept. 1**, **students will be released at noon** so teachers can attend training to help meet literacy goals in our implementation of the Alaska Reads Act.

## DISMISSAL PROCEDURES

**Monday-Thursday:**  
**2:30-2:40** - Staff  
Load Buses  
**2:40** - After buses  
leave, doors open for  
parents to get their  
kids from their  
classrooms.

**Fridays:**  
**1:00-1:10** - Buses  
**1:10** - Doors open

## ME SCHOOL NEEDS AIDES

We are looking for 5 intensive needs aides. INAs start at over \$20 per hour. Below are a couple of key details about the position.

### INTENSIVE NEEDS AIDE (INA)

**Qualifications:** Diploma or GED.

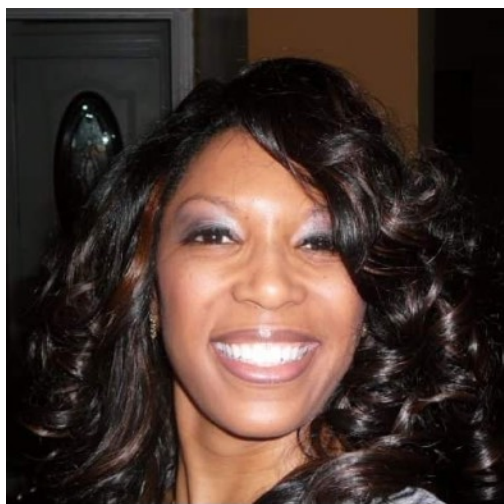
#### Main Duties:

- Work with specific students to present and reinforce lessons planned by a teacher.
- Support specific student's needs.
- Supervision and support duties.

## ME SCHOOL DAY INFO

- 7:45a.m. Doors Open
- 7:50-8:10 Breakfast
- 8:10 School Starts
- Students arriving after 8:15a.m. will be tardy.
- Lunch & Recess are 30 minutes each, by grade level
- **Dismissal:**
  - 2:30p.m. Mon.-Thu.
  - 1:00p.m. on Fridays

# Please help welcome our new principal, Ms. Kellie!



Kellie Ketchum-Umphrey is so happy to be in Bethel Alaska at the ME School!

Kellie has worked in the field of education for over 30 years. Her adoration for teaching children started in Elementary Education as a teacher of Third and Fourth grade in Fairbanks, Alaska. Following her relocation to the Lower 48, her career in Early Childhood Education was launched!

Kellie's experience in several administrative roles has assisted her in climbing the ladder of leadership and professionalism. Kellie has utilized her expertise and organizational skills to assist flailing educational institutions in increasing attendance and enrollment, enhance educational programming, develop curriculum integrity, and develop staff into strong educational advocates, not only for children, but for themselves as well.

Prior to her position at ME school, Kellie was the Program Manager Early Head Start and the Council of Three Rivers American Indian Center in Philadelphia Pennsylvania, as well as the Educational Administrator for Sobieski Enterprises in Wilmington Delaware.

Kellie is a wife to Mark, a mother to Karlie, Markel and Jaelin and a "Boba" to one grandson.

## **To reduce spreading illnesses...**

\*Please keep your child home for 24-hours after they vomit.

\*If your child has a fever of 100.4 degrees or higher, please keep them home until they are fever-free for 24 hours without the use of fever-reducing medicines.

EMAIL- If you would like to receive school information via email, please call the office and tell us your email address so we can add it to our PowerSchool system. 543-2845

.....  
**This institution is an equal opportunity provider.**